

RCB-350, 450, 550

HIGH RIGIDITY • LARGE BORE

The RCB-Series rotary tables feature an extra large center bore. RCB tables utilize a powerful dual disc hydraulic clamping mechanism. Ideal for Energy manufacturing.

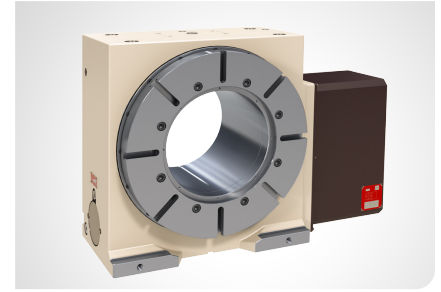
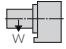
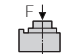
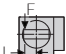
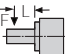


Table Model		RCB-350	RCB-450	RCB-550
Versions available		R	R	R
Table diameter		350	450	550
Center height		255	310	350
Center bore	Nose Diameter	245H7	295H7	345H7
	Thru Diameter	215	265	315
Table T-slot width		14H7	14H7	18H7
Guide block width		18H7	18H7	18H7
Servo motor*		Alpha 12i	Alpha 22i	Alpha 22i
Maximum motor speed rpm		4,000	3,000	3,000
Speed reduction ratio		1/90	1/90	1/120
Maximum table speed rpm		44.4	33.3	25
Inertia converted into motor shaft $\times 10^{-3}\text{kg}\cdot\text{m}^2$		3.48	6.14	6.01
Clamp system**		Hydraulic	Hydraulic	Hydraulic
Clamp torque @500psi Nm (ft. lbs.)		3,300 (2,432)	4,700 (3,464)	6,500 (4,790)
Indexing accuracy arc sec.		± 7.5	± 7	± 7.5
Net Weight kg (lbs.)		400 (880)	520 (1,144)	720 (1,584)
Allowable wheel torque Nm (ft. lbs.)		1,942 (1,431)	3,276 (2,414)	4,716 (3,475)
Allowable work inertia $\text{kg}\cdot\text{m}^2$		6.1	17.7	37.8
Allowable load when table clamped	 kg (lbs) [w/tailstock] W/SSB Support	400 (880) [800 (1,760)] 1800 (3960)	700 (1,540) [1,400 (3,080)] 3600 (7920)	1,000 (2,200) [2,000 (4,400)] 3600 (7920)
	 N (lbf)	29,400 (6,586)	45,000 (10,080)	54,000 (12,096)
	 Nm (ft. lbs.)	3,300 (2,432)	4,700 (3,464)	6,500 (4,790)
Allowable work inertia $\text{kg}\cdot\text{m}^2$	 Nm (ft. lbs.)	3,626 (2,672)	8,000 (5,896)	15,132 (11,152)

* Other motors & RPM available

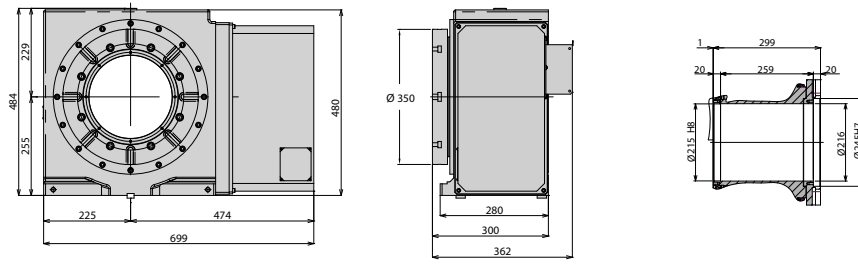
** Booster optional

Specifications subject to change without notice

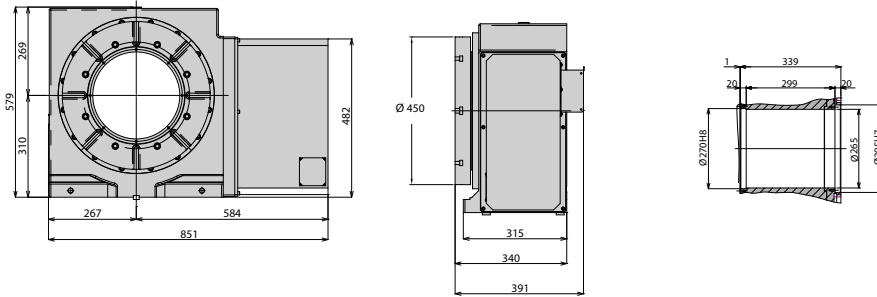
Dimensions

Drawings not to scale • Dimensions = mm

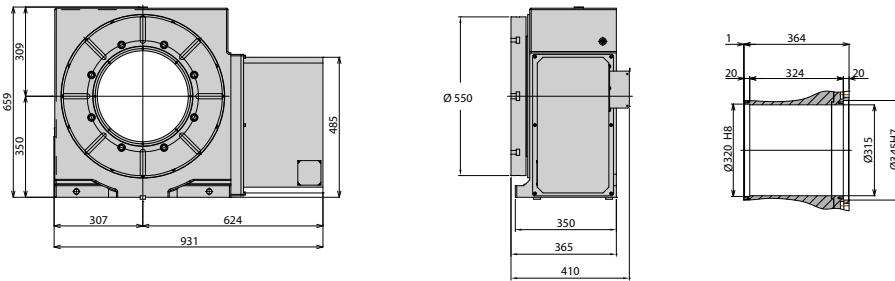
RCB-350



RCB-450



RCB-550



The dimensions above are for tables with a FANUC servo motor. Other motors available (dimensions may increase).

Options & Accessories

TPC NC Controller	p.62
Chucks	p.74
Tailstock	p.75
Support Spindle	p.77
Face Plate	p.77
Encoder / Scale	p.78
Pull Stud Device	p.79
Rotary Joint	p.79
Booster	p.80
PVC or Steel Cables	p.81

Clamping Block and Bolt

Dimensions = mm

	Type	Q'ty	T-Slot Width	A	B	C	D	E	F	G	H	I	J	K	L	M
RCB-350	I	4	14	30	15	90	16	31	43	25	21	11	70	46	28	16
RCB-450	I	4	14	40	20	110	18	42	50	25	21	11	70	46	28	16
RCB-550	I	4	18	40	20	110	18	42	50	25	21	11	70	46	28	16

Note: When using a machine with a T-slot pitch other than the above, use suitable clamping blocks and bolts that are available on the market, or order custom-made ones from KOMA (opt.)

Type I

